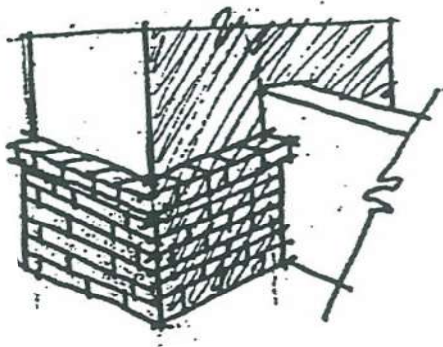




Stone Used as a Second Material (Accent)

1. Application of stone to the front elevation of home must have prior approval. A photo of the home must be attached to the submittal with a cut sheet. Cut sheet should also include manufacturer, style and color of stone.
2. Stone placed on the front elevation which wraps around the side elevation must continue to a point of intersection at an inside corner. **Example 1.**
3. Stone placed on the front elevation must not end at an outside corner. **Example 2.** Stone must be wrapped around corner a minimum of 6".
4. Stone placed on "pop outs" must be applied three dimensional (all three sides).
5. Stone applied as a wainscoting must continue to a point of intersection at an inside corner. **Example 1.**
6. No field stone style of stone will be considered for approval.
7. All stone must be installed in a professional manner.

Example 1



Example 2-Not Allowed

